

**MATERIAL**

**WS ~1.2067**

Skaft / Shaft ca. 60 HRC  
 Huvud / Head ca. 45 HRC

**WAS ~1.2343/1.2344**

Yta / Surface ca. 950 HV  
 Kärna / Core ca. 45 HRC

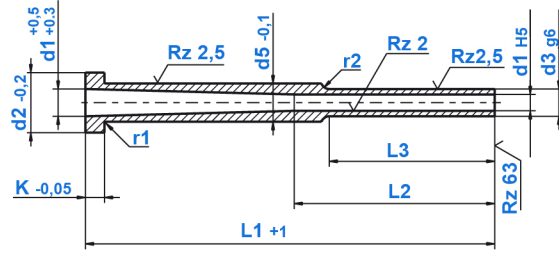
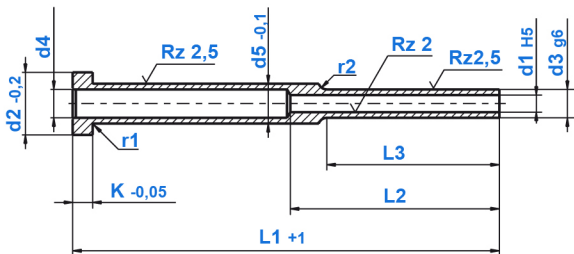
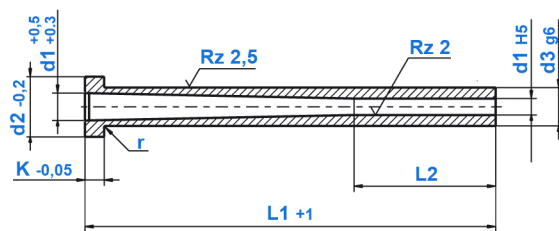
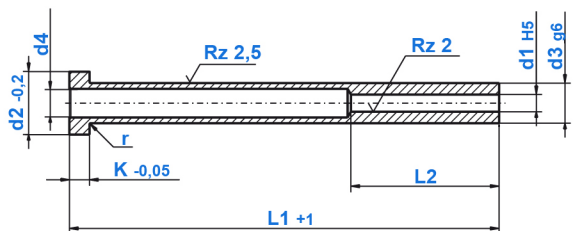
**TYP OCH YTBELÄGGNING / TYPE AND COATING**

Rörutstötare  
 Ejector Sleeve

Steglös Rörutstötare  
 Ejector Sleeve Stepless

DLC Beläggning  
 DLC Coating

Yttjocklek / Layer thickness. ~2µ



d3	L1	d1	L2	d2	K	d4	d5	L3	Antal/Qty

**KONTAKT / CONTACT**

Order

Offert / Request

Företag / Company:

Adress / Street, No:

Postnummer / Post code:

Ort / City:

Kontaktperson / Contact person:

Telefon / Phone:

E-Mail:

Ordernr. / Order nr.:

Offertnr. / Request nr.: