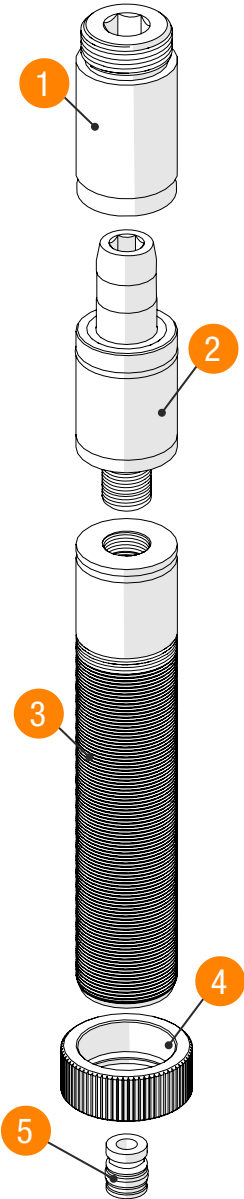


CUMSA

INNOVATIVE SOLUTIONS
FOR YOUR MOLDS



INSERT CHANGER - IC

ID	Description	IC.04	IC.12
1	Insert Part	IC041208	IC122018
2	Mold Part	9IC040100	9IC120100
3	Extension	9IC040100-E	9IC120100-E
4	Nut	9TP121018	9TP201016
5	Cartridge	3CARST-3100-04	

*Supplied individually