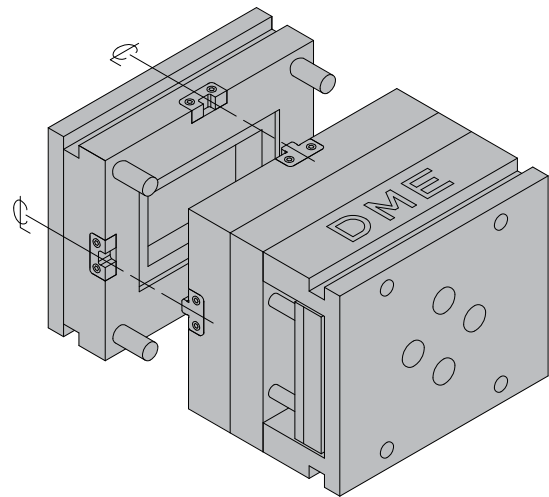
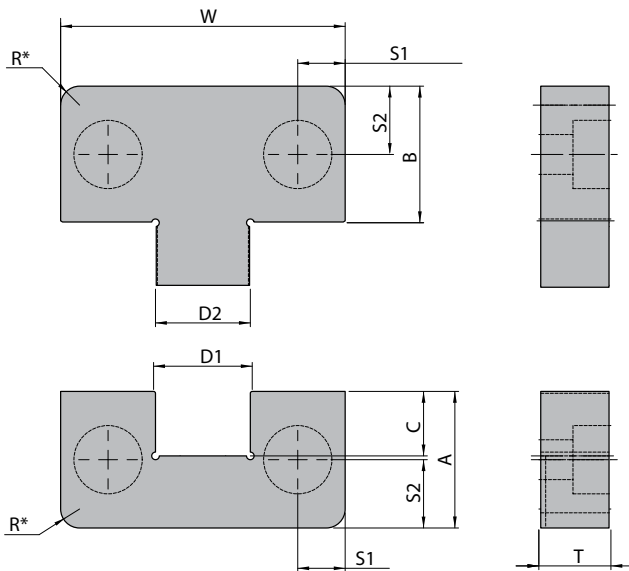


Female Interlock – Material:  
 D2 Steel Heat Treat: Core Hardened to 57-61 HRC  
 Surface Treatment: TiN – Titanium Nitride Coated  
 Male Interlock – Material:  
 AISI H-13 Steel Heat Treat: 40-44 HRC  
 Surface Treatment: Melonite (SBN)

DME Side Interlocks provide:  
 Accurate alignment of mould halves  
 Easy installation  
 Industry-compatible sizes

Installation  
 Install four (4) Side Interlocks per mould (one per side)  
 Install Side Interlocks on the Center Line of each side of the mould



REF	T +0,00 -0,05	W +0,00 -0,01	A +0,00 -0,05	B +0,00 -0,05	C +0,50 +0,20	D1 +0,005 +0,002	D2 -0,005 -0,002	R Pocket Radius +0/-0,5	S1 ±0,2	S2 ±0,2	SHCS
BGS05016	16	50	21,5	21,5	12	17	17	5	8,0	11	M6-1,0x20LG
BGS07519	19	75	36,0	36,0	17	25	25	5	12,5	18	M10-1,5x25LG
BGS10019	19	100	45,0	45,0	23	35	35	5	15,0	22	M10-1,5x25LG
BGS12525	25	125	45,0	45,0	23	35	35	5	20,5	22	M10-1,5x30LG

CAD reference point

