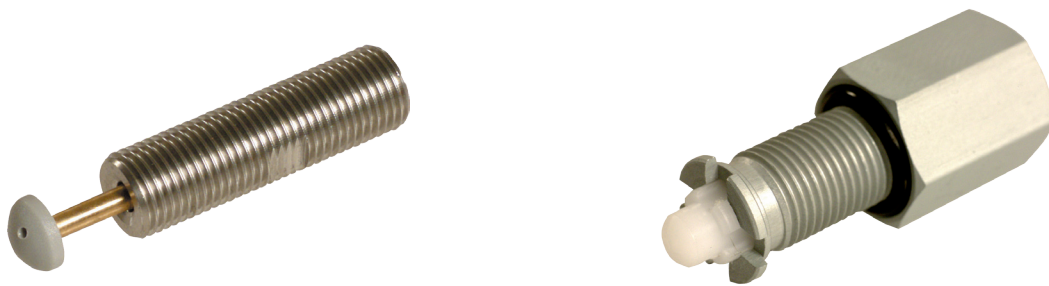




Touch valves



Product notes

- > Maintains the vacuum level in vacuum systems
- > Mechanical scanning leaves unused suction openings closed
- > Spring-loaded suspension allows for any mounting position
- > Low susceptibility to dirt and very safe operation

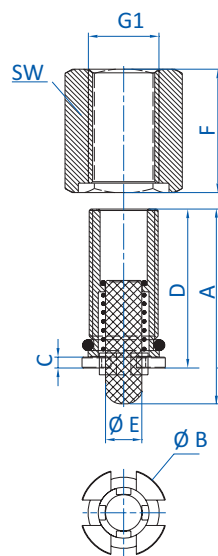
Notes

- > Touch valves are directly screwed into vacuum cup, no further fittings needed

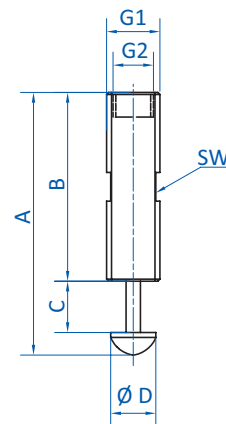
Technical data

Item no.	Type	Touch stroke [mm]	Weight [g]	Suitable fittings
270.129	female	5	7	--
270.130	female	7	62	270.268, 270.266, 270.286
63.026	male	13	29	270.179, 270.180
63.027	male	5	21	270.179, 270.180
63.032	male	8	8	270.090

Dimensions



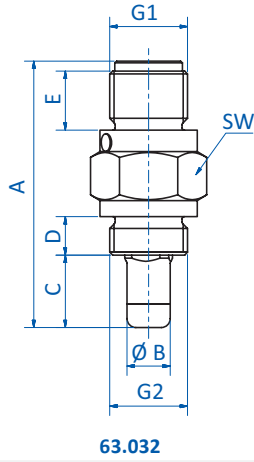
270.129 | 270.130



63.026 | 63.027



Dimensions



Item no.	G1	G2	A [mm]	B [mm]	Ø B [mm]	C [mm]	D [mm]	Ø D [mm]	E [mm]	Ø E [mm]	F [mm]	SW
270.129	G1/8	--	27	--	12	1.5	22	--	--	5	17	14
270.130	G1/2	--	43	--	25	1.5	35	--	--	8	32	30
63.026	G1/4	G1/8	65	45	--	13	--	11	--	--	--	11
63.027	G1/4	G1/8	56	46	--	5	--	11	--	--	--	11
63.032	G1/4	G1/4	45	--	7.3	12	6.5	--	10	--	--	17