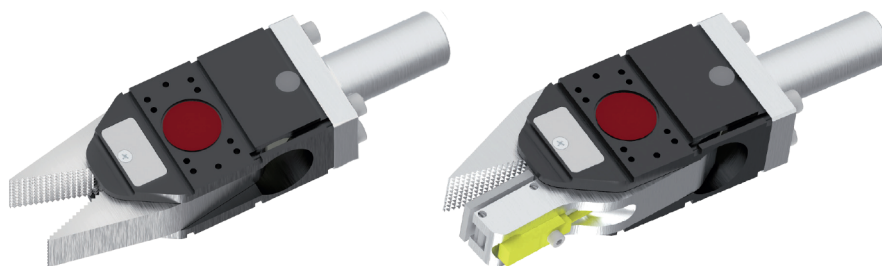


Series 325 – power grippers without stroke – single-acting



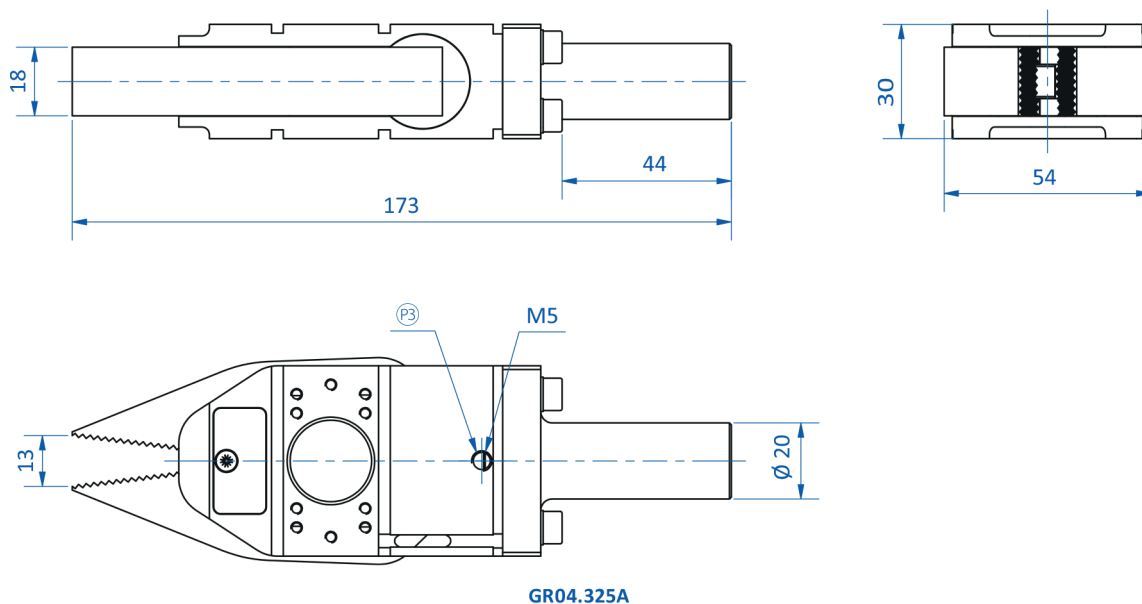
Product notes

- > Very strong, single-action power gripper
- > Ideally suited for demoulding large components in particular
- > Optionally available with direct sensor scanning (Sensor with 3-pin male and M8 connector included in scope of delivery)
- > Clamping force measured at the jaw tip
- > The end positions of the lifting cylinders can be sensed with optional sensors
- > Standard clamping diameter 30 mm, available on request with clamping diameter 20 mm
- > Other customer-specific designs or adaptations are possible and easy to implement – please contact our sales department

Technical data

Item no.	Jaw	Sensor	Closing force at 6 bar (87 psi) [N]	Operating pressure [bar (psi)]	Weight [g]	Suitable sensors
GR04.325A	Standard	without	365	2.5 - 6 (36.3 - 87)	352	--
GR04.325A-1P	Standard	PNP	365	2.5 - 6 (36.3 - 87)	381	GS04.001
GR04.325A-1N	Standard	NPN	365	2.5 - 6 (36.3 - 87)	381	GS04.002

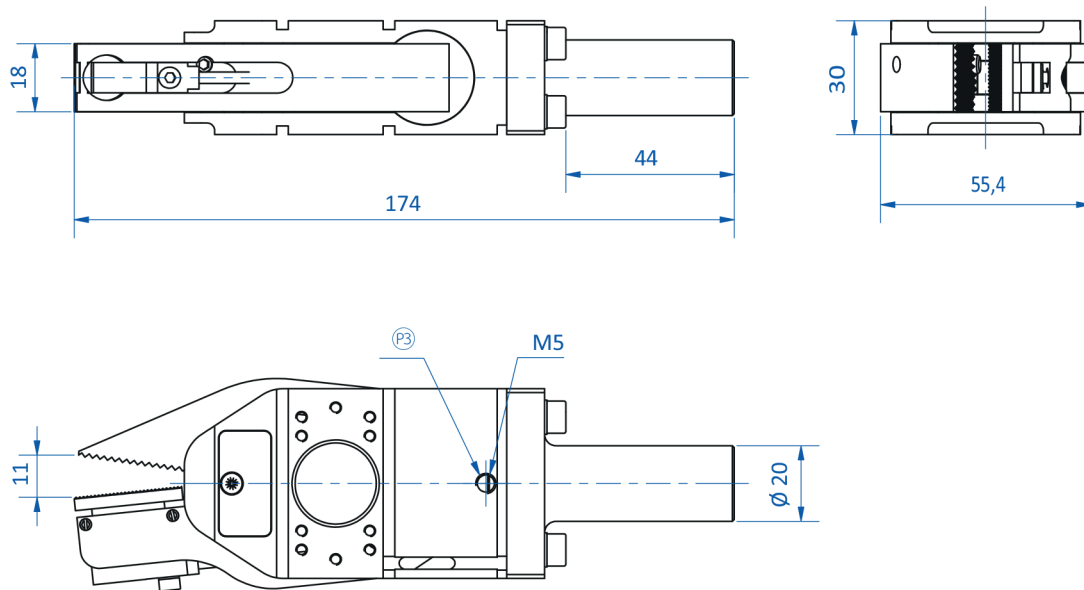
Dimensions



Ⓟ = Compressed air connection gripper



Dimensions



GR04.325A-1P | GR04.325A-1N

Ⓟ = Compressed air connection gripper