



Sequential Valve Gate Control

New generation GC!

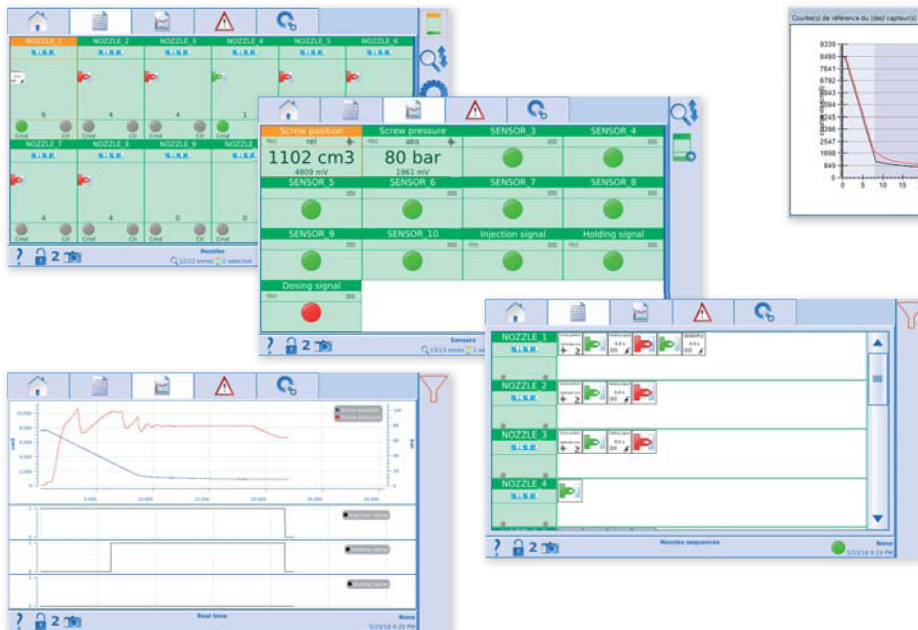
INDUSTRY 4.0



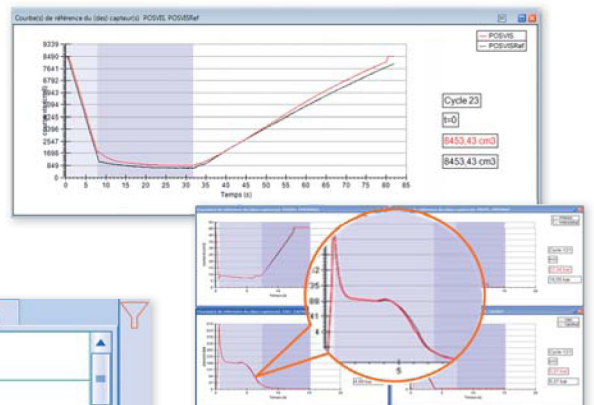
The new GC product line is specially designed for sequential valve gate control and Industry 4.0. In addition to standard control, SISE has given these controllers new acquisition features (SPC) to measure process performance and drift, using indicators with mono or multivariate management of machine signals & mold sensors.

This new product line offers traceability of the process, and can save or send data to various users via the OPC UA protocol.

GC SOFTWARE :



WIN IS'PSP SOFTWARE :





SiSE16389

TECHNICAL SPECIFICATIONS	IS'TIMER	GC'ACCESS	GC'TECH
Dimensions - H x W x L (mm)	208x216x310	400x303x341	556x303x341
Colour Touchscreen	LCD	7"	10"
Display Pdf Files	No	Yes	Yes
Download program files by USB stick	No	Yes	Yes
Number of gates single solenoid (spring return)	8 - 16	6 - 12 - 18	6 - 12 - 18 - 24 - 30 - 36
Number of gates dual solenoid	No	6 - 12 - 18	6 - 12 - 18 - 24 - 30
Openings/Closings per cycle per gate	2	2	10
Multilingual	Yes	Yes	Yes
Max. number of mould files	24	Unlimited	Unlimited
Mold Recognition (available in 2021)	No	No	Yes
Process monitoring	No	Yes	Yes
Machine Signals	2	6	8
Number of mold signals	0	0	10
Machine safety management	Yes	Yes	Yes

PROGRAMMING	IS'TIMER	GC'ACCESS	GC'TECH
Injection Signal	Yes	Yes	Yes
Hold Signal	Yes	Yes	Yes
Dosing Start	No	No	Yes
Screw Position in mm, cm ³ / in, in ³	No	Yes	Yes
Injection Pressure	No	Yes	Yes
Switchover control	No	No	Yes
Scrap detection	No	Yes	Yes
Max. Mold Pressure Sensors	No	No	8
Max. Mold Temperature Sensors	No	No	2
Graphical display of sensor signals in real-time	No	Yes	Yes
Individual valve pin testing in manual mode	Yes	Yes	Yes

OPTIONS	IS'TIMER	GC'ACCESS	GC'TECH
Multi-material management (available begin 2021)	No	No	Yes
Double solenoid management	No	Option	Yes
Control by limit switch	No	6 - 12	6 - 12 - 18 - 24
VNC link to Press or remote monitor	No	Yes	Yes

PARAMETERS AND TRACEABILITY 4.0	IS'TIMER	GC'ACCESS	GC'TECH
Displays Cycle Time	No	No	Yes
Cycle counter	No	Yes	Yes
Manage Files (unlimited creating/saving)	No	Yes	Yes
Scrap detection (SDP, SPC)	No	Yes	Yes
Create and Calculate Performance Indicators	No	No	Yes
Switchover setting	No	No	Yes
Traceability by saving acquisition sessions (available end 2021)	No	No	Cabinet / Software
Export Data from saved sessions (available end 2021)	No	No	Cabinet / Software
Labels management (available end 2021)	No	No	Cabinet / Software
Connect with MES system - OPCUA (available end 2021)	No	No	Yes

GC-Tech Views :

Auxiliary Equipment :
Hydraulic Power Pack, Manifolds,...

